

May 2010

## **IMPORTANT NOTIFICATION TO GASFITTERS**

### **Gas Meter - Outlet Service Connection**

APA Group (APA), who are responsible for installing gas services in South Australia, have introduced a standard requirement for outlet service connection to domestic gas meters due to the availability and use of non rigid gas piping materials such as polyethelene, and composite piping, whilst also allowing for any future piping materials.

**The purpose of this notification is to advise gasfitters of the APA approved standard installation requirements.**

---

#### **Background**

In recent years in South Australia there has been an increase in the number of approved piping materials available to the trade for the installation of gas outlet services.

Requirements for the different pipes vary, in particular with regards to their appropriateness for direct connection to the gas meter.

To provide for correct and appropriate connection of all brands and material types APA have found it necessary to standardise the outlet pipe connection to gas meters.

This standard provides for appropriate connection in all domestic gas meter installations for all material types into the future.

#### **APA Standard Requirement**

**Effective from July 1, 2010, where a gas outlet service is installed using non metallic piping material (including composite pipe), the gas meter shall only be connected on the consumer (outlet) side of the gas meter using a metallic\* piping material for the standpipe riser.**

**The metallic standpipe riser shall terminate below ground (freestanding meter), or inside the wall cavity (wall box meter), as illustrated in figures 1 & 2 of this bulletin.**

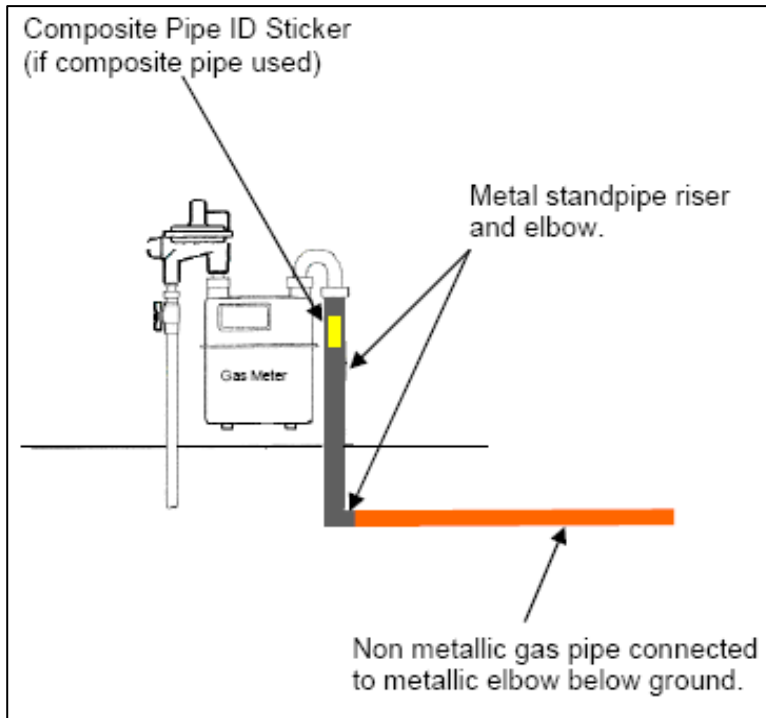
*\*The most common metallic piping material is galvanised steel, and copper tube.*

#### **Non-Compliant Installations**

Where new installations are found to not comply to this standard, APA will refer the matter to the consumer, builder or gas fitter to arrange for the outlet service to be modified.

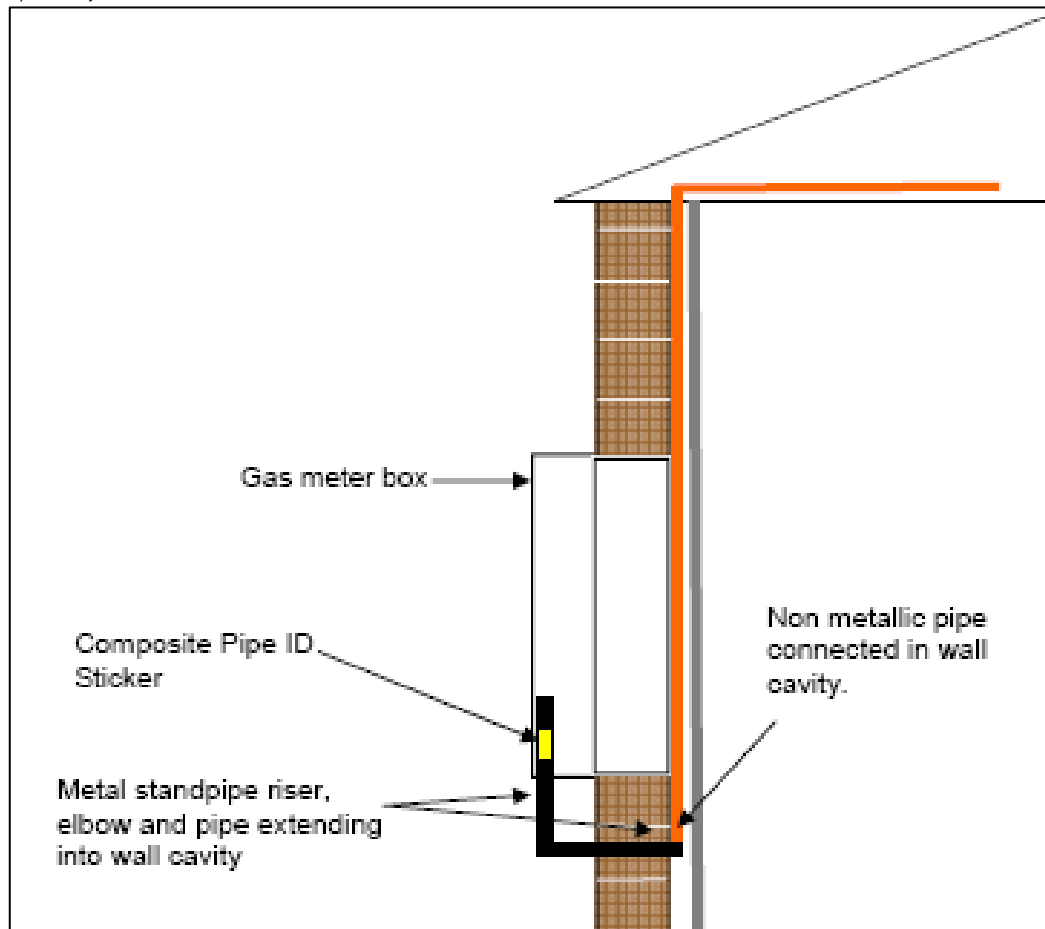
APA will not complete the installation of the gas meter until the outlet service is compliant with this standard.

**Figure 1 – Freestanding Meter**



*Drawing is not to scale and for representational purposes only*

**Figure 2 – Wall Box Meter**



*Drawing is not to scale and for representational purposes only*

**Enquiries**

If you have any queries relating to the information contained in this bulletin, please contact the APA Group Natural Gas Connection Line, telephone 1300 001 001, your Natural Gas representative, or The Office of the Technical Regulator on telephone (08) 8226 5722.